

## Mont Terri Rock Laboratory

### Field report: June 21-27, 2021 (Phase 26)

#### CD-A (Influence of Humidity on Cyclic and Long-Term Deformations) experiment

- Tuesday and Wednesday, the PI G. Ziefle and C. Ostertag-Henning (BGR) installed a gas sampling port in the wall of the closed twin niche (**Figure 1**). This allows sampling of gas from the interior of the closed niche without opening the door.
- For a first test, a Neon tracer pulse experiment has been started to follow gas - and water vapor - exchange between the closed niche and the gallery. Gas samples were taken over three days and sampling is continued for the next four weeks by swisstopo. Gas analyses will be conducted in Hannover by BGR.

#### HE-F (Gases & Water Soluble Organic Compounds in OPA at Elevated T/p) experiment

- From Tuesday to Friday, C. Fixar, D. Nowotny and C. Ostertag-Henning (BGR) drilled the second borehole BHE-F2 into the rock volume heated during the HE-D experiment (**Figure 2**). The intact 101 mm diameter core recovered contains a transect of 12 m Opalinus Clay from non-heated to heated to non-heated rock volume and will be investigated for geochemical changes due to the heating in the laboratories of BGR in Hannover.

#### HT (Hydrogen Transfer in Opalinus Clay) experiment

- On Wednesday, Y. Lettry (Solexperts) performed maintenance work on the surface installations.

#### Varia

- On Thursday, the first on-site meeting of the Commission de Suivi since a very long time took place in the CCV.

#### Visits

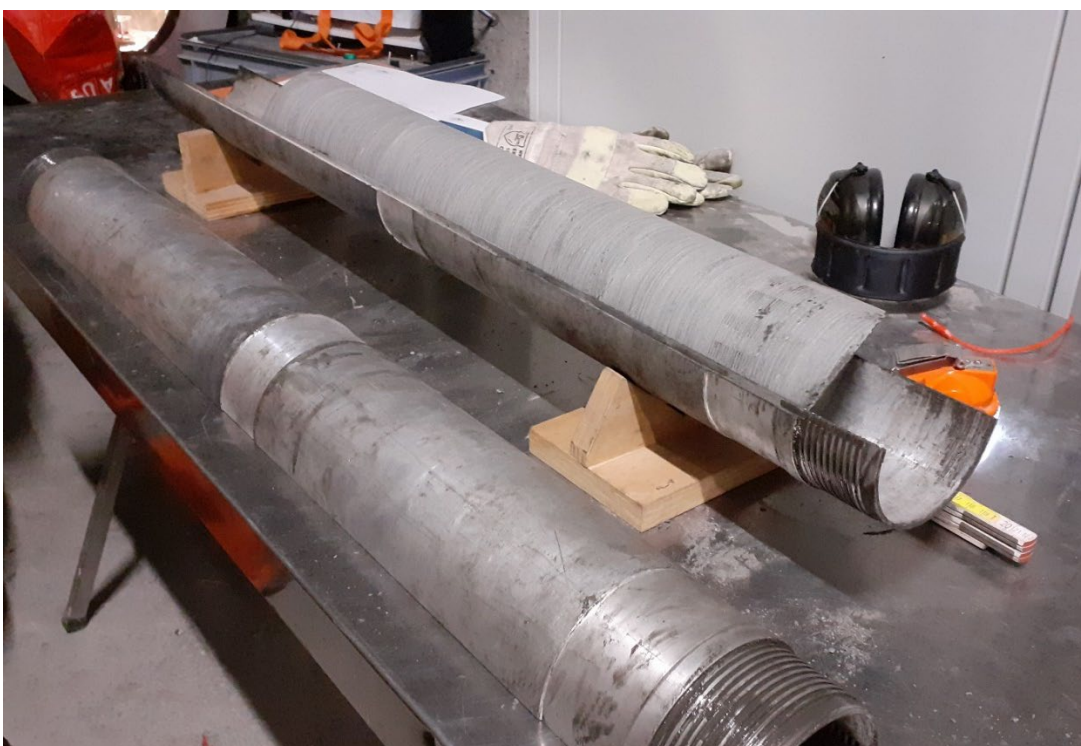
Mo	21.06.2021	Students Division technique CEJEF, Porrentruy (JU)	16	M. Pretalli
Tue	22.06.2021	Students Ecole secondaire Haute-Sorne, Bassecourt (JU)	17	R. Nicol
Tue	22.06.2021	Students Division technique CEJEF, Porrentruy (JU)	12	M. Pretalli
Thu	24.06.2021	Students Gymnasium Lerbematt, Köniz (BE)	39	H. Sager, R. Nicol
Thu	24.06.2021	Commission de suivi	12	C. Nussbaum
Fr	25.06.2021	Ecole primaire Château, Delémont (JU)	25	R. Nicol, C. Boner

Sa	26.06.2021	Gewerbe Kreuzlingen (TG)	9	R. Nicol
Sa	26.06.2021	Metron Verkehrsplanung AG, Brugg (AG)	30	H. Hauser, C. Boner

D. Jaeggi and S. Schefer, June 27, 2021



**Figure 1: CD-A:** C. Ostertag-Henning installing the new gas port next to the door of the Niche Closed Twin (Photo: G. Ziefle, BGR).



**Figure 2: HE-F:** Core samples from BHE-F2 (Photo: V. Regard, swisstopo).