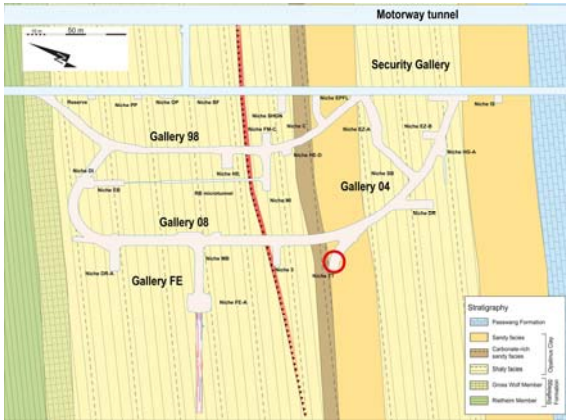




Guide



4 Information on 'sandy facies'



Objective: In the Mont Terri rock laboratory the distinction is made between different types of clay, sandy facies and shaly facies. The differences are clearly visible (shaly facies are darker; sandy facies are speckled). Both types have particularly different mechanical properties.

Procedure: Precise mapping of sediment structures.
Making various boreholes, removal of drillcore samples.
Geotechnical investigations in the laboratory, analysis of the geological deposits.

Results: Sandy facies seem to have advantages for construction purposes. They are more stable. The permeability and retention capability (sorption) are somewhat similar in both types (shaly and sandy facies).

Start: 2009
End: 2015
Project Partners: BGR, NAGRA, swisstopo
Cost: around CHF 130,000