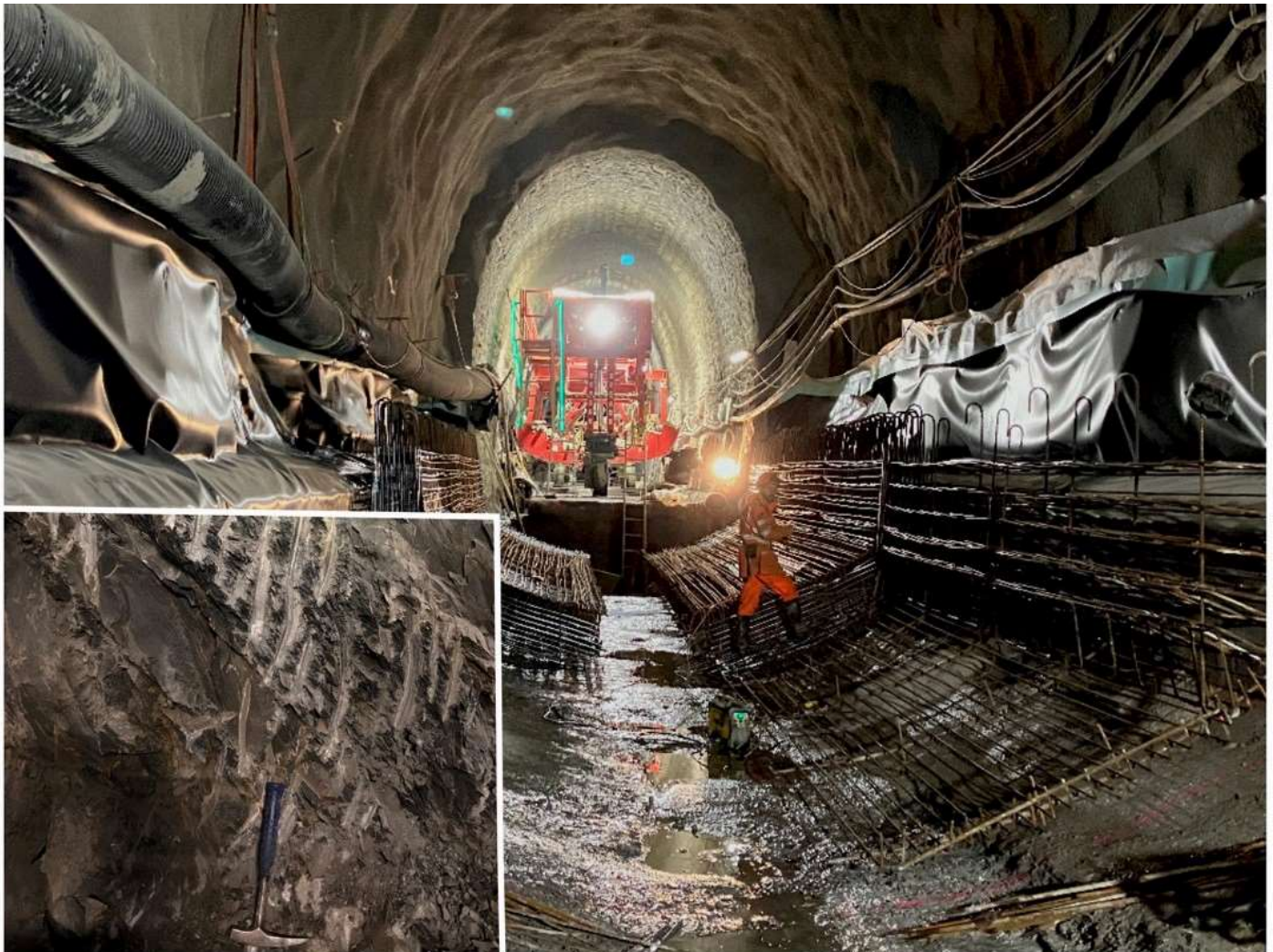
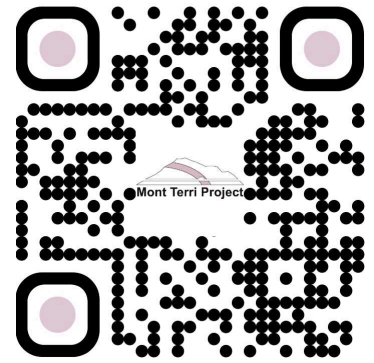


Mont Terri Project Underground Rock Laboratory

Report period: March 3–9, 2025

Assembled and edited by swisstopo, St-Ursanne



Spotlight of the week: Last week I had the opportunity to visit the Weissenstein tunnel, a 3.8 km long railway tunnel built in 1905. The tunnel crosses the first anticline of the Jura Mountains and also passes three times through the Opalinus Clay at an overburden of nearly 600 m. The renewal of the tunnel lining also includes the removal of the damaged rock. In general, it was necessary to widen the radius of the tunnel by 1-2 m before the more or less intact rock was reached; but no drilling was done to check it. The picture shows the thick floor in the Opalinus Clay section before concreting. The inset shows a nice scaly clay fault zone subparallel to the bedding, as we also observe in the Mont Terri Rock Laboratory (pictures: D. Jaeggi, swisstopo).

FS-B (Imaging the Long-Term Loss of Faulted Host Rock Integrity) experiment

- From Tuesday to Thursday, March 4–6, S. Braunschweig and F. Durulan (Eul GmbH) drilled BFS-B13 down to 25 m.

PF-A (Progressive Evolution of Structurally-Controlled Overbreaks: Long-term monitoring, hydromechanical simulation and rock testing) experiment

- From Monday to Thursday, March 3–6, S. Schefer (swisstopo) moved the ERT measuring equipment from SW-A to PF and M. Furche (BGR) remotely performed one cross hole measurement after the other with M. Abdelouhabi (swisstopo) switched the connectors every time.

SW-A (Large-Scale Sandwich Seal in Opalinus Clay) experiment

- From Monday to Thursday, March 3–6, S. Schefer (swisstopo) moved the ERT system to the PF site. Measurements on shaft 1 continued Thursday during the night.
- On Monday, March 3, S. Schefer (swisstopo) refilled the HPT of shaft 1.

TE (Aquifer Thermal Energy Storage in Fractured Limestone) experiment

- On Monday, March 3, D. Zuber (Zuber sàrl) dug a wellhead cellar for borehole BTE-1. It will be drilled in the parking niche P2 in the near future (Figure 1).

Visits

Day	Date	Group Name	Group Size	Visitors Guide
Wed	5.3.2025	Institut Sup Galilée De L'Université Sorbonne Paris Nord	21	M. Abdelouhabi (swisstopo)

Figures

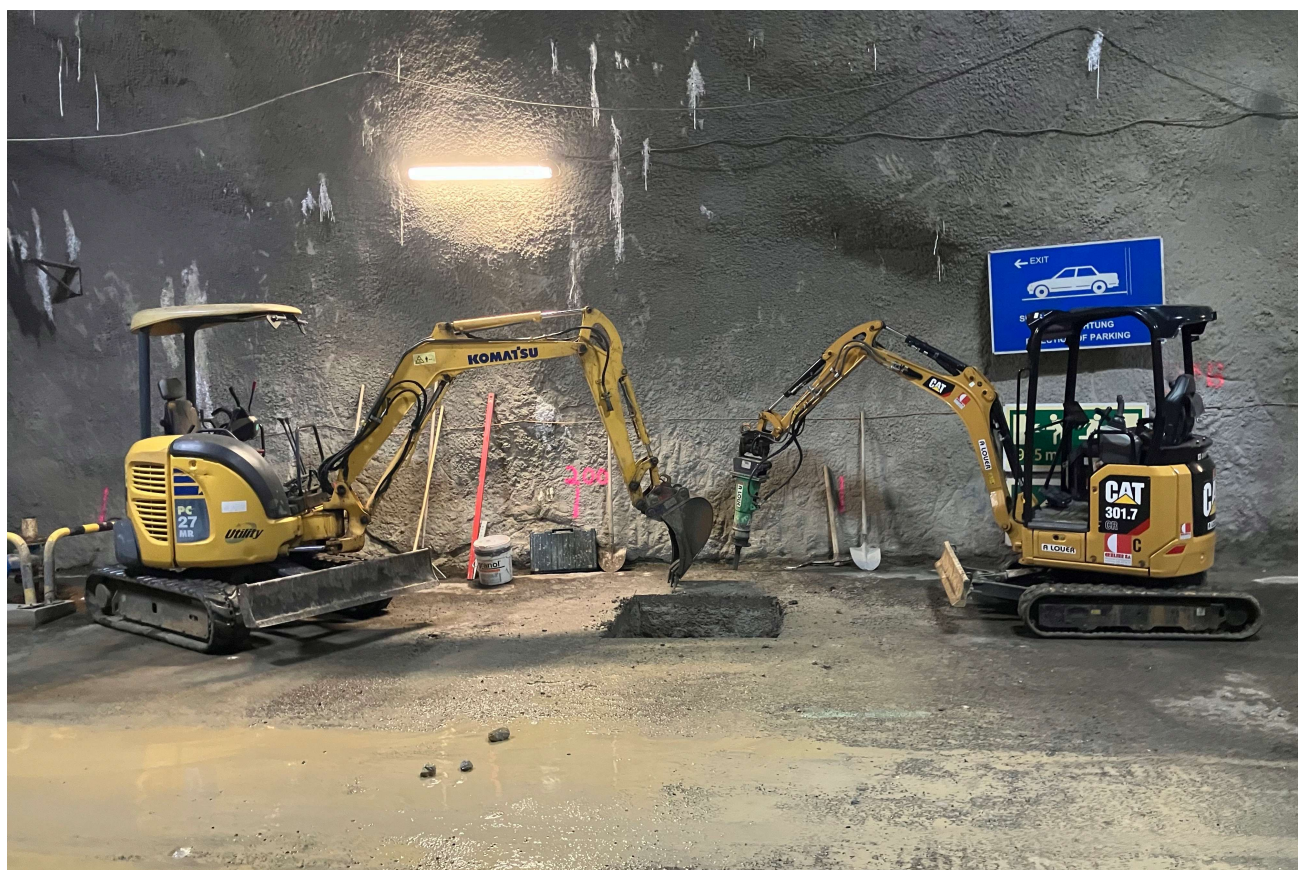


Figure 1: TE: Drilling of the well head cellar for borehole BTE-1 (T. Theurillat, swisstopo).