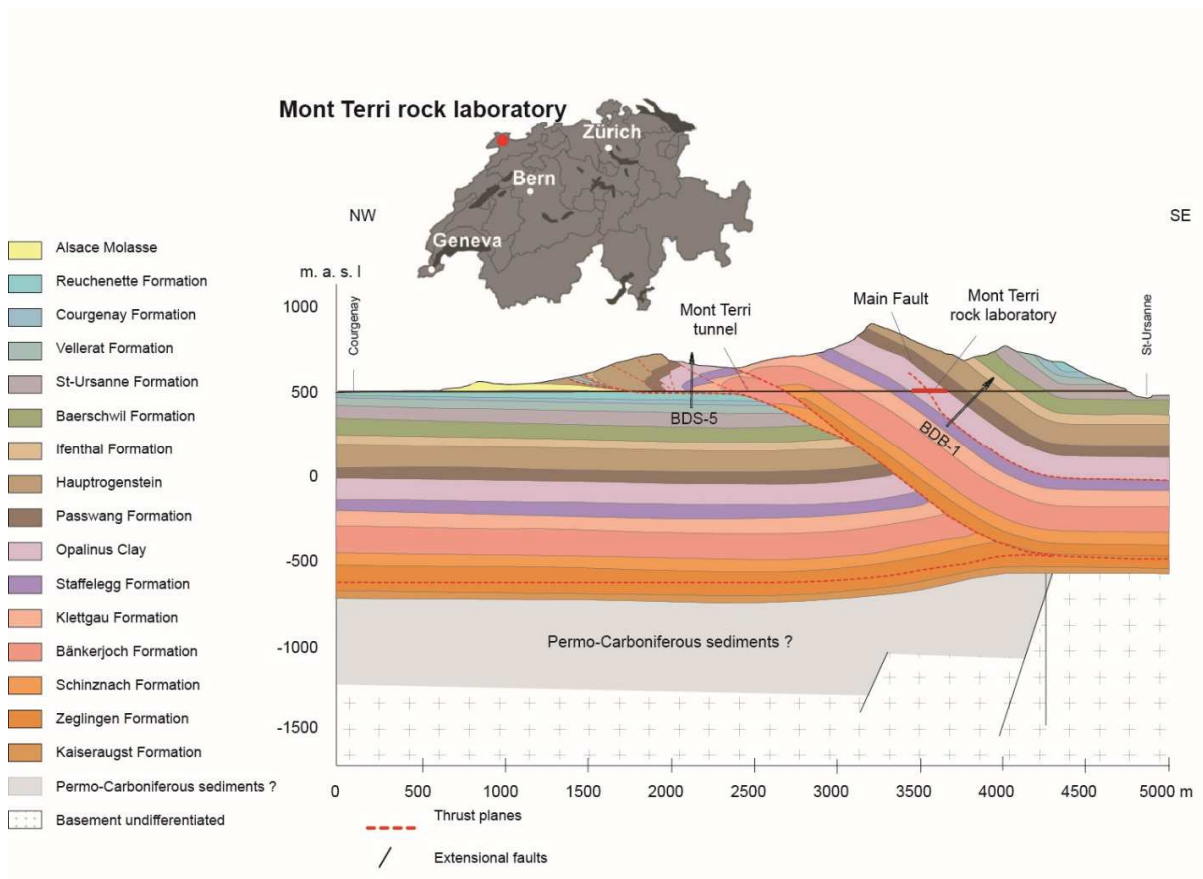


# Stratigraphy of the Opalinus Clay and adjacent formations at the Mont Terri rock laboratory

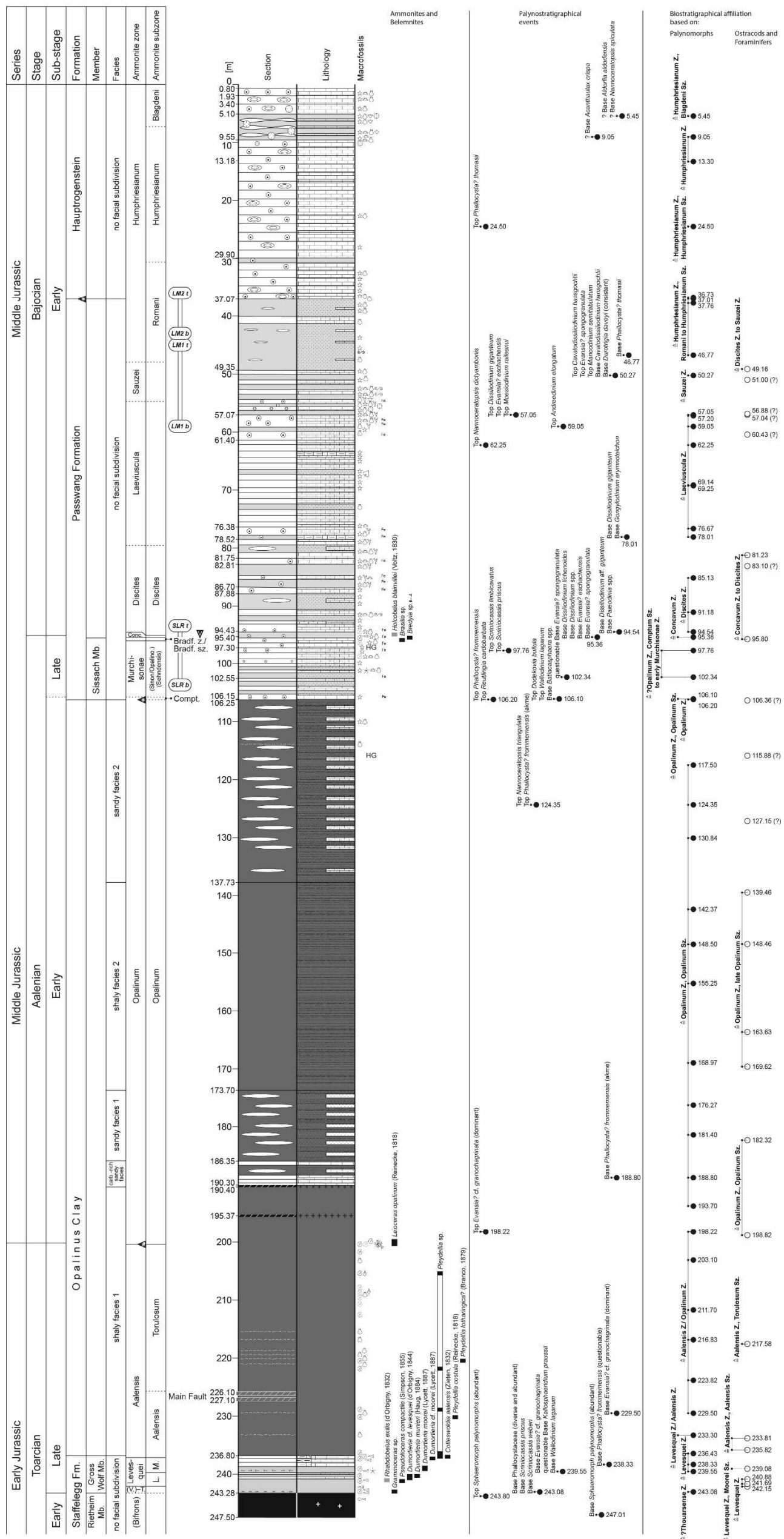
## Borehole BDB-1 (247.5 m)

Extract from Hostettler et al., 2017

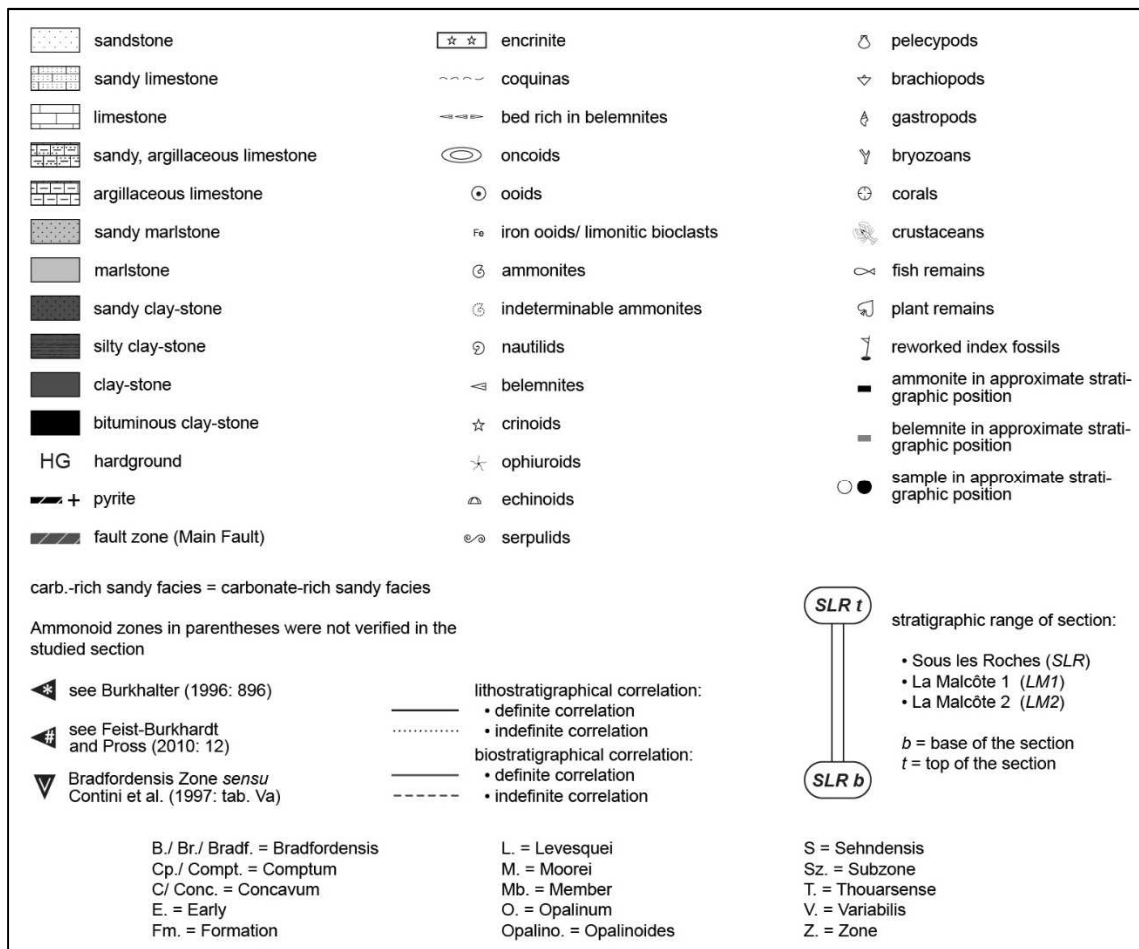


**Fig. 1:** Location of the Mont Terri rock laboratory within the Mont Terri anticline and geological situation of borehole BDB-1. For comparison the location of borehole BDS-5 is displayed as well.

Section Mont Terri BDB-1 borehole (St. Ursanne/JU); coord.: 2°57'515/ 1°24'7.412



**Fig. 2:** Detailed section of the Early and Middle Jurassic strata of the Mont Terri BDB-1 drill core. Plotted next to the section are the position of macrofossil finds, selected palynological events in the section used for palynostratigraphical age dating and the biostratigraphic interpretation and age assignment of samples to ammonite zones/subzones based on palynomorphs, and ostracods and foraminifers respectively (After Hostettler et al., 2017).



**Fig. 3:** Key of Figure 2 (After Hostettler et al., 2017).

## Reference:

Hostettler, B., Reisdorf, A.G., Jaeggi, D., Deplazes, G., Blaesi, H.R., Morard, A., & Menkveld-Gfeller, U. (2017). Litho- and biostratigraphy of the Opalinus Clay and bounding formations in the Mont Terri rock laboratory. *Swiss Journal of Geosciences*, 110